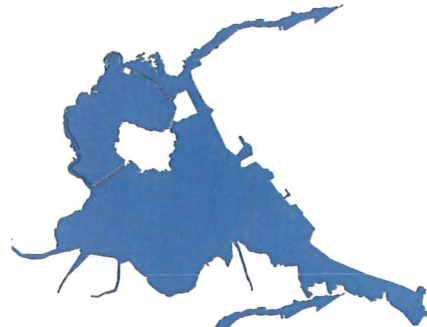
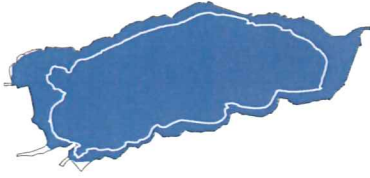
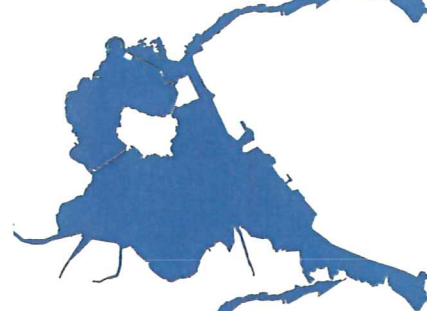
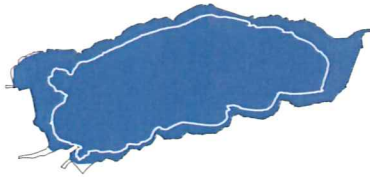


H11:冬期(1-3月)

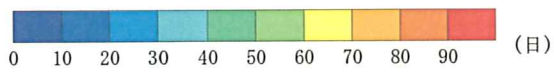
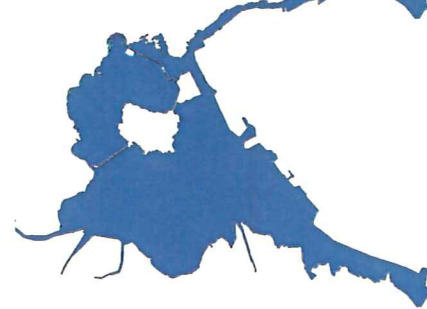
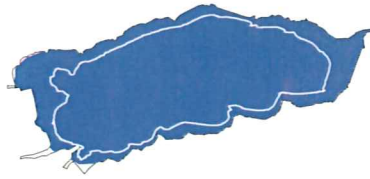
【現況】



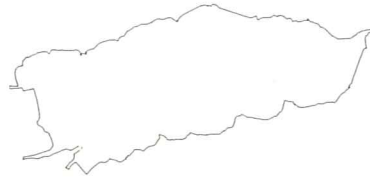
【バックグラウンド後】



【大橋川改修後】



【バックグラウンド後-現況】



【大橋川改修後-バックグラウンド後】

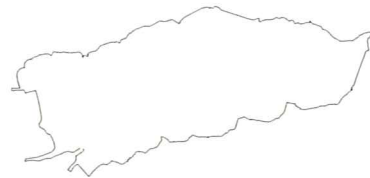
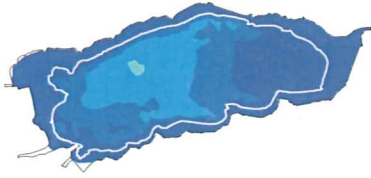


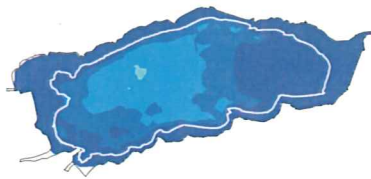
図 6. 1. 1-561 2mg/L 以下の溶存酸素累加日数の平面分布【底層，冬期 1-3 月集計，H11】

H11:春期(4-6月)

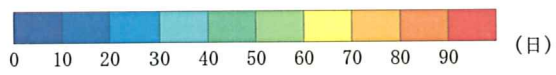
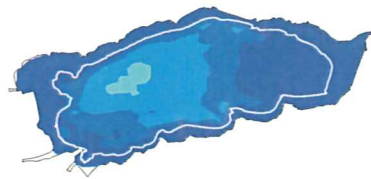
【現況】



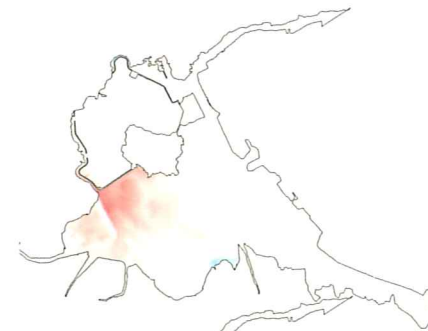
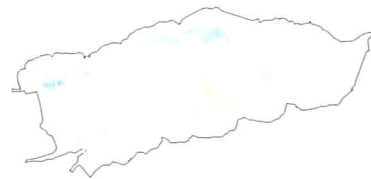
【バックラウンド後】



【大橋川改修後】



【バックラウンド後-現況】



【大橋川改修後-バックラウンド後】

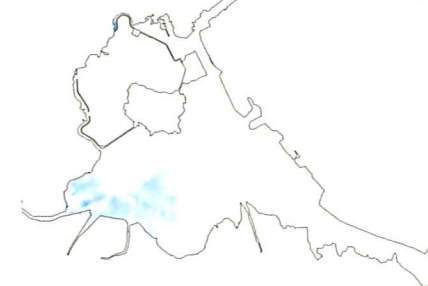
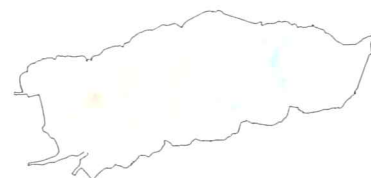
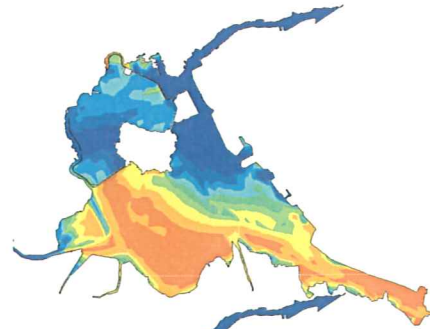
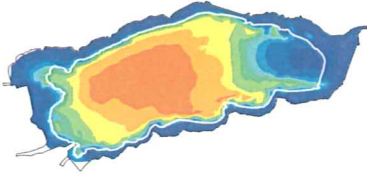


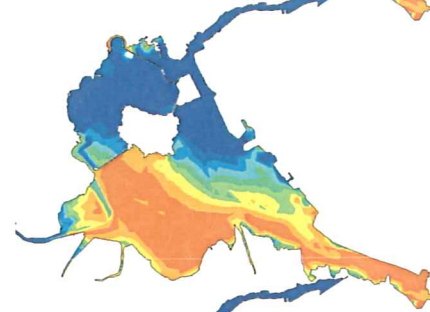
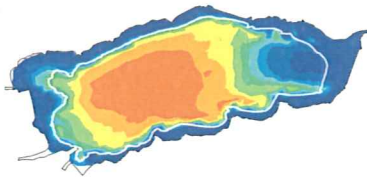
図 6. 1. 1-562 2mg/L 以下の溶存酸素累加日数の平面分布【底層, 春期 7-9 月集計, H11】

H11:夏期(7-9月)

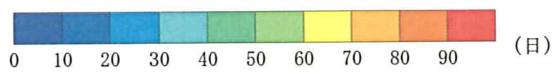
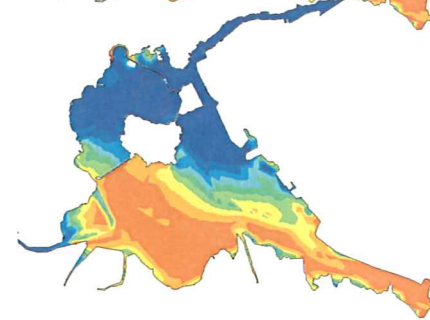
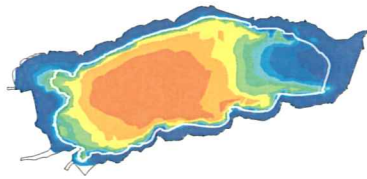
【現況】



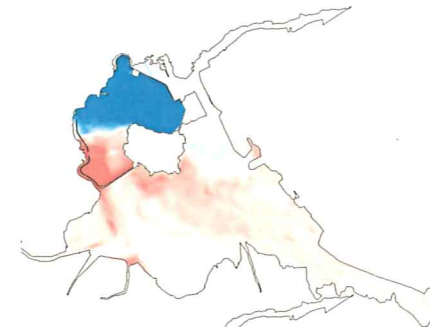
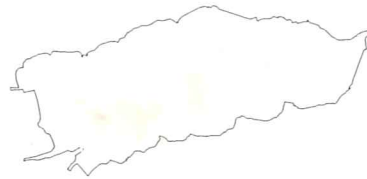
【バックラウンド後】



【大橋川改修後】



【バックラウンド後-現況】



【大橋川改修後-バックラウンド後】

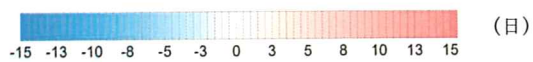
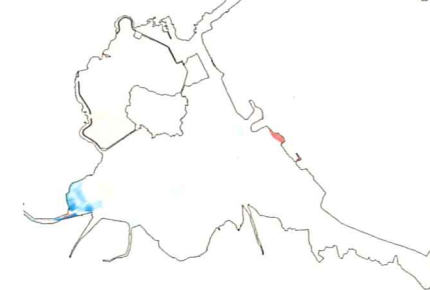
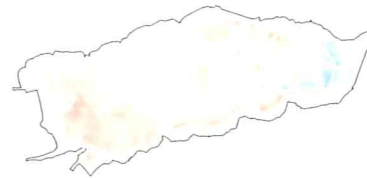
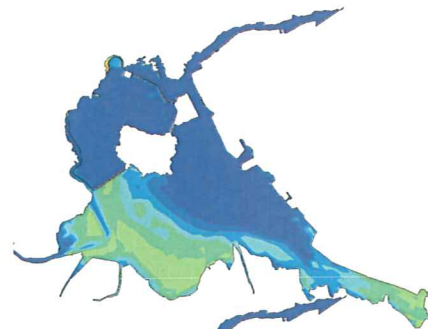
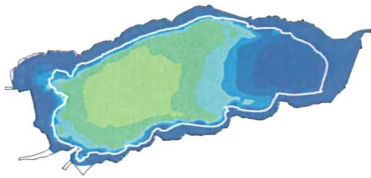


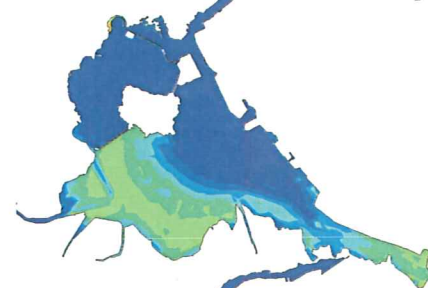
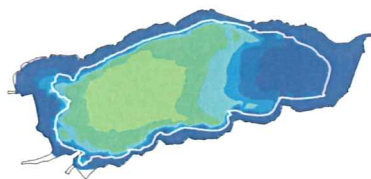
図 6. 1. 1-563 2mg/L 以下の溶存酸素累加日数の平面分布【底層, 夏期 1-3 月集計, H11】

H11:秋期(10-12月)

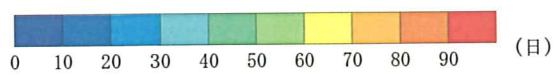
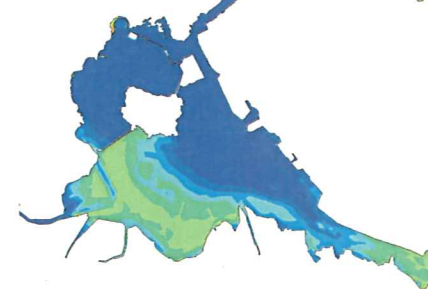
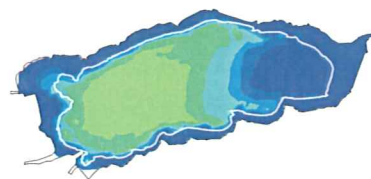
【現況】



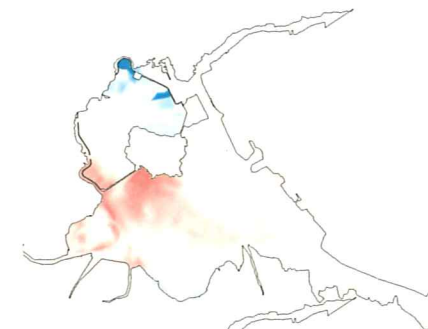
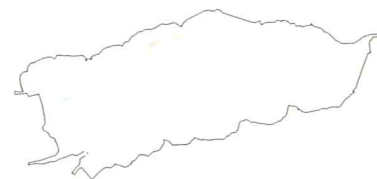
【バックラウンド後】



【大橋川改修後】



【バックラウンド後-現況】



【大橋川改修後-バックラウンド後】

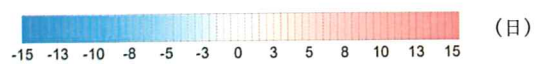
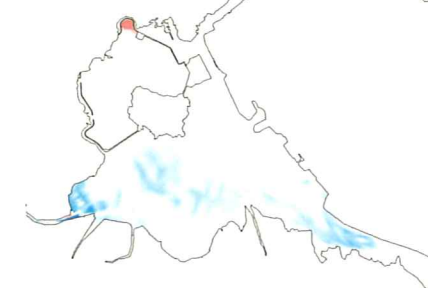
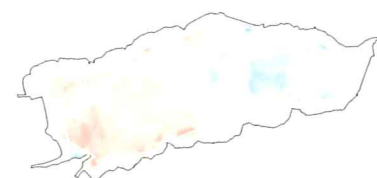
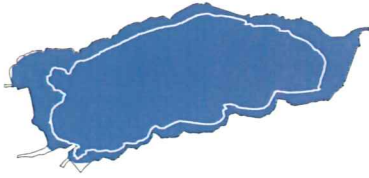


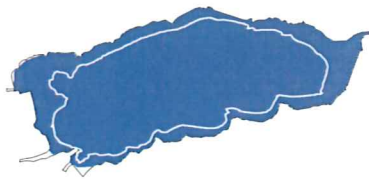
図 6. 1. 1-564 2mg/L 以下の溶存酸素累加日数の平面分布【底層, 秋期 10-12 月集計, H11】

H12:冬期(1-3月)

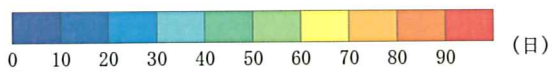
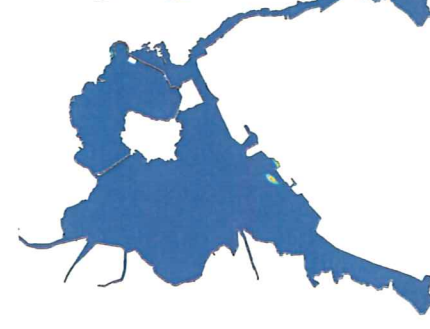
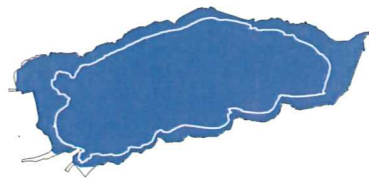
【現況】



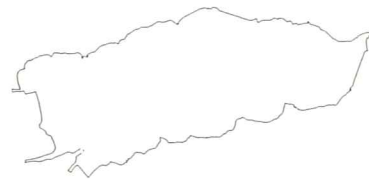
【バックラウンド後】



【大橋川改修後】



【バックラウンド後-現況】



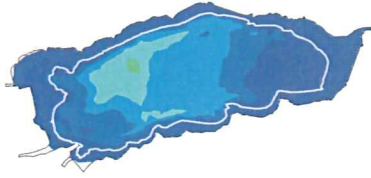
【大橋川改修後-バックラウンド後】



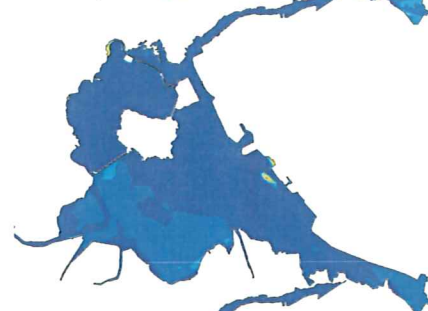
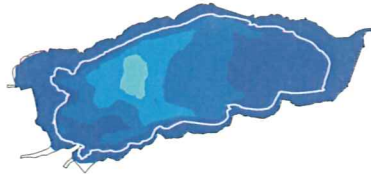
図 6. 1. 1-565 2mg/L 以下の溶存酸素累加日数の平面分布【底層, 冬期 1-3 月集計, H12】

H12: 春期(4-6月)

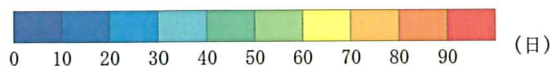
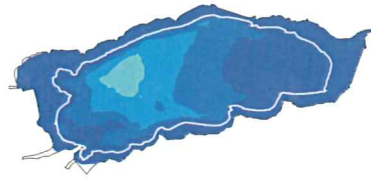
【現況】



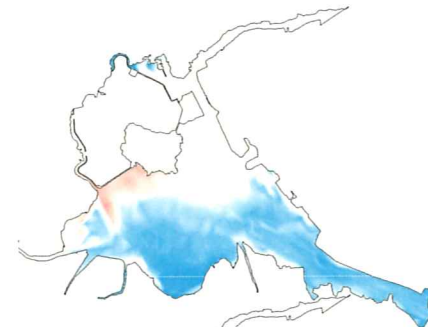
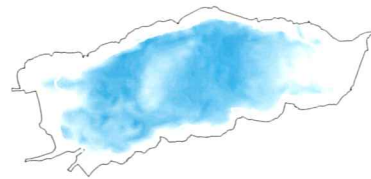
【バックグラウンド後】



【大橋川改修後】



【バックグラウンド後-現況】



【大橋川改修後-バックグラウンド後】

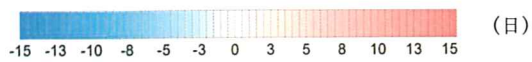
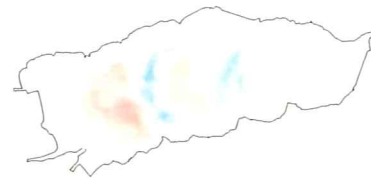
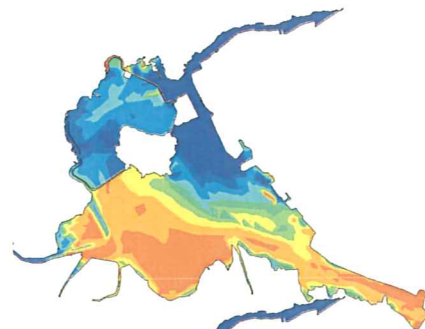
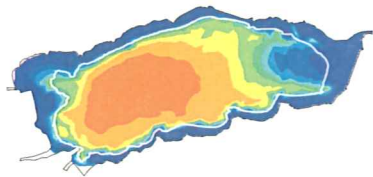


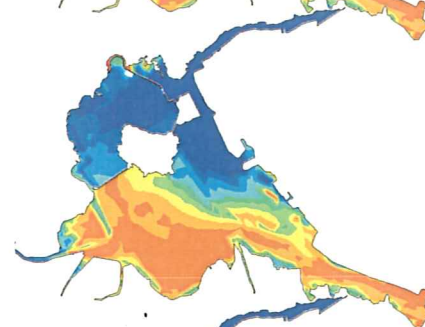
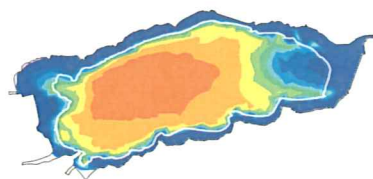
図 6. 1. 1-566 2mg/L 以下の溶存酸素累加日数の平面分布【底層, 春期 7-9 月集計, H12】

H12:夏期(7-9月)

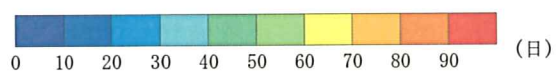
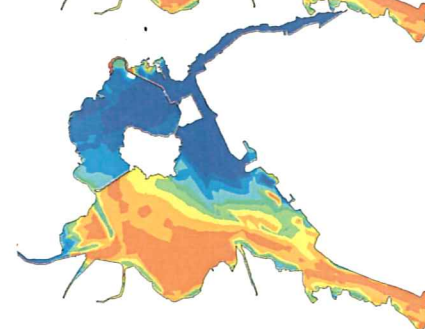
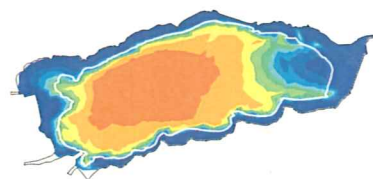
【現況】



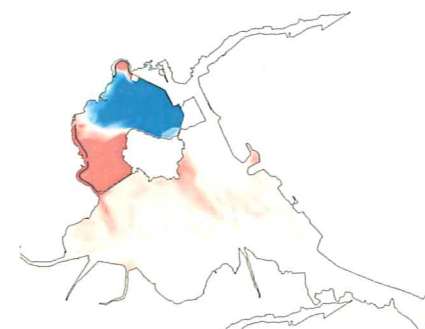
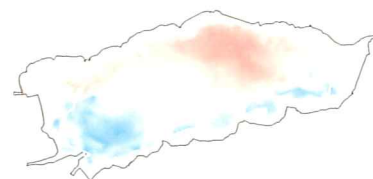
【バックグラウンド後】



【大橋川改修後】



【バックグラウンド後-現況】



【大橋川改修後-バックグラウンド後】

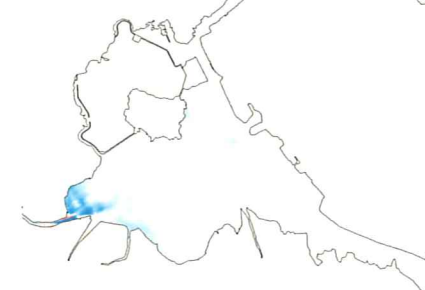
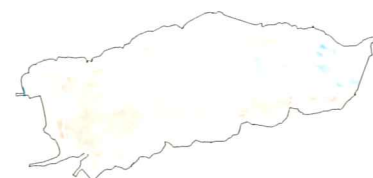
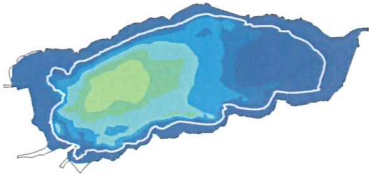


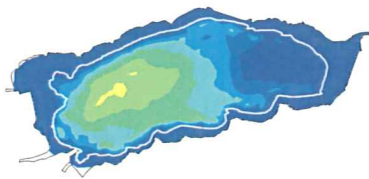
図 6.1.1-567 2mg/L 以下の溶存酸素累加日数の平面分布【底層, 夏期 1-3 月集計, H12】

H12:秋期(10-12月)

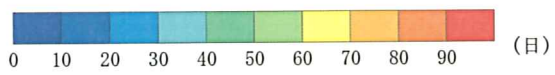
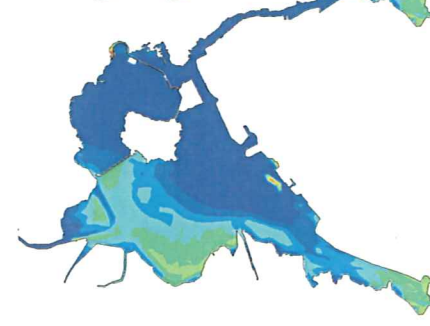
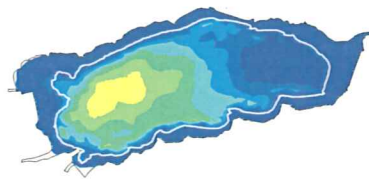
【現況】



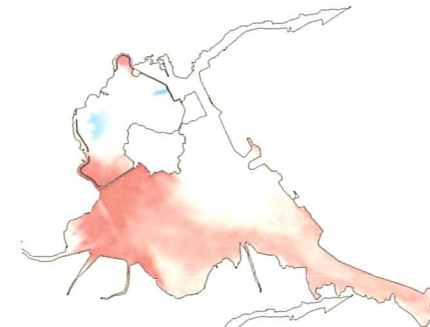
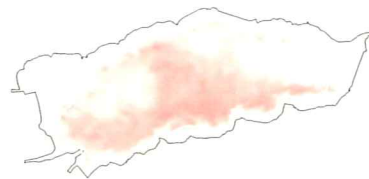
【バックグラウンド後】



【大橋川改修後】



【バックグラウンド後-現況】



【大橋川改修後-バックグラウンド後】

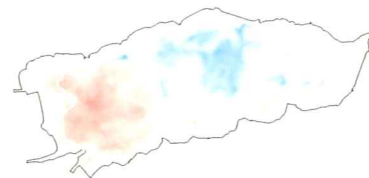
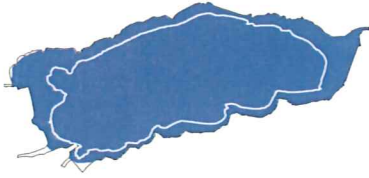


図 6. 1. 1-568 2mg/L 以下の溶存酸素累加日数の平面分布【底層, 秋期 10-12 月集計, H12】

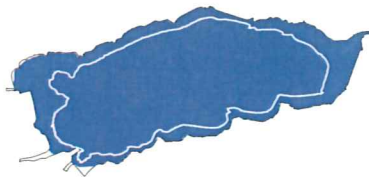


H13:冬期(1-3月)

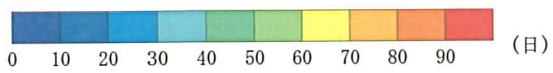
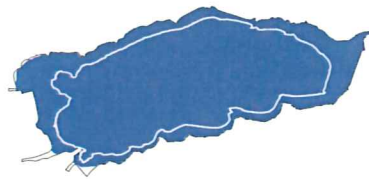
【現況】



【バックグラウンド後】

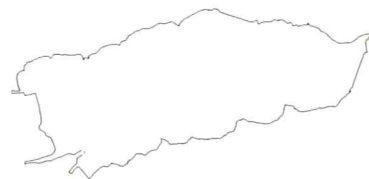


【大橋川改修後】

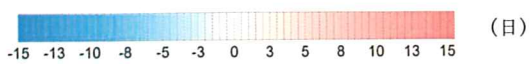
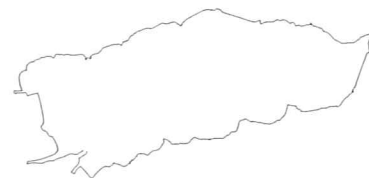


(日)

【バックグラウンド後-現況】



【大橋川改修後-バックグラウンド後】

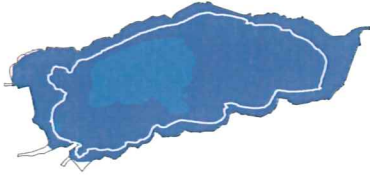


(日)

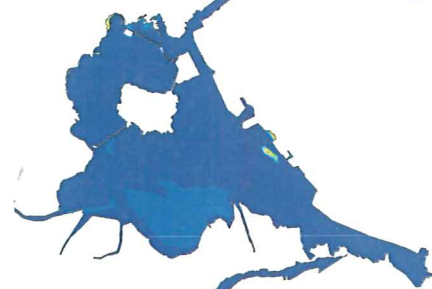
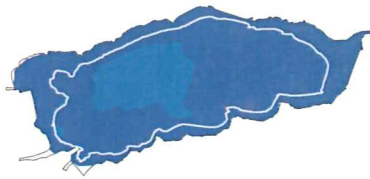
図 6. 1. 1-569 2mg/L 以下の溶存酸素累加日数の平面分布【底層, 冬期 1-3 月集計, H13】

H13:春期(4-6月)

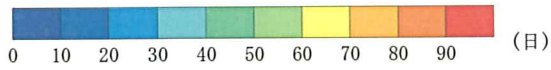
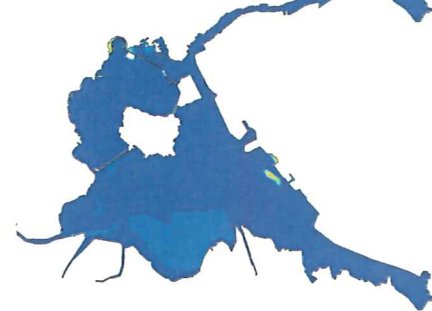
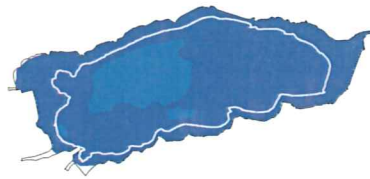
【現況】



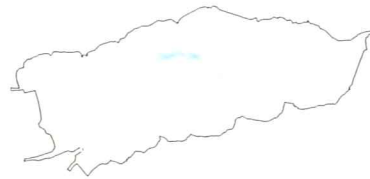
【バックグラウンド後】



【大橋川改修後】



【バックグラウンド後-現況】



【大橋川改修後-バックグラウンド後】

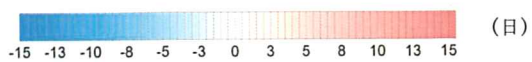
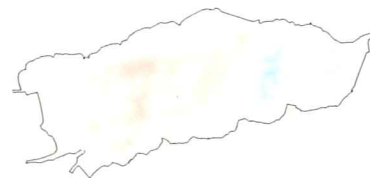
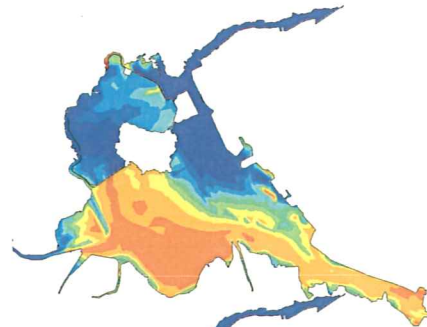
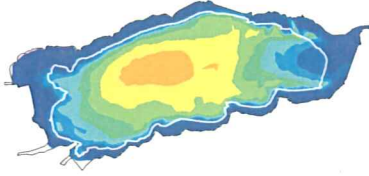


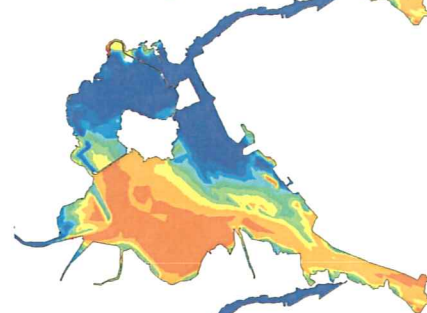
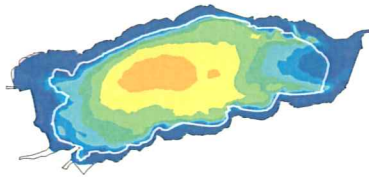
図 6. 1. 1-570 2mg/L 以下の溶存酸素累加日数の平面分布【底層, 春期 7-9 月集計, H13】

H13:夏期(7-9月)

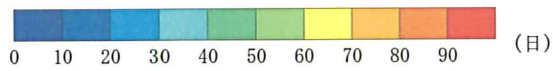
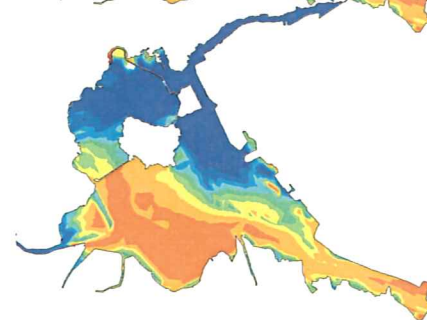
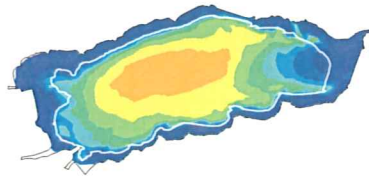
【現況】



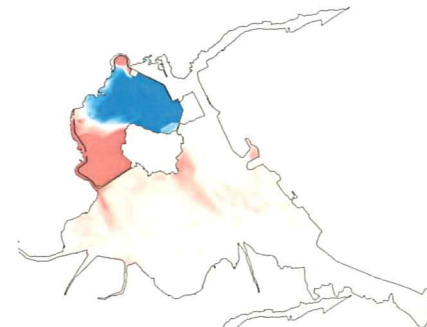
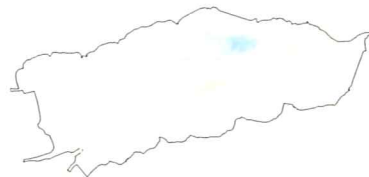
【バックグラウンド後】



【大橋川改修後】



【バックグラウンド後-現況】



【大橋川改修後-バックグラウンド後】

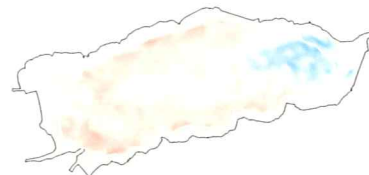
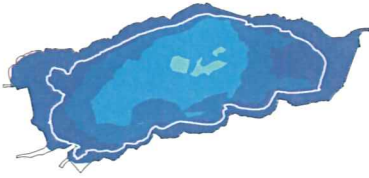


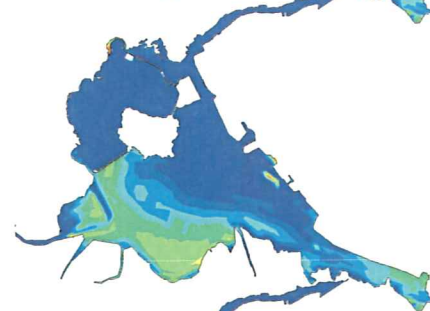
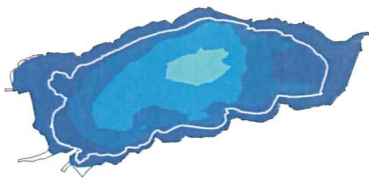
図 6. 1. 1-571 2mg/L 以下の溶存酸素累加日数の平面分布【底層, 夏期 1-3 月集計, H13】

H13:秋期(10-12月)

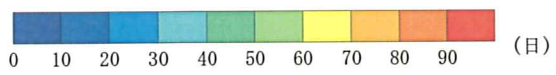
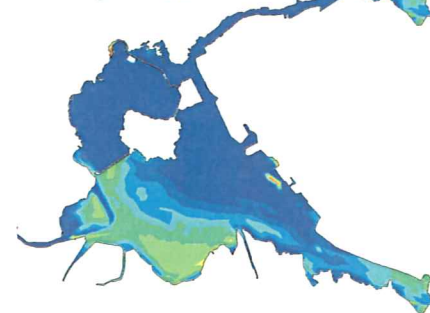
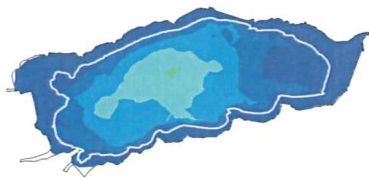
【現況】



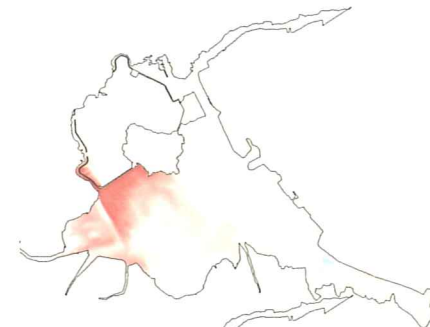
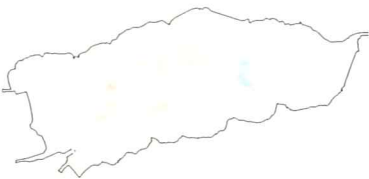
【バックラウンド後】



【大橋川改修後】



【バックラウンド後-現況】



【大橋川改修後-バックラウンド後】

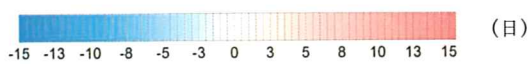
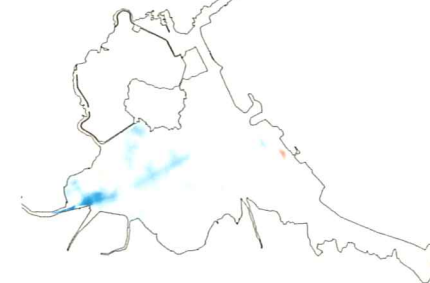
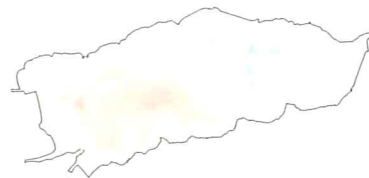
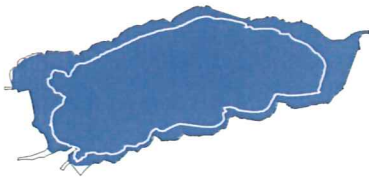


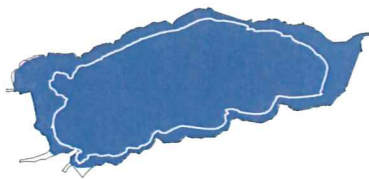
図 6. 1. 1-572 2mg/L 以下の溶存酸素累加日数の平面分布【底層, 秋期 10-12 月集計, H13】

H14:冬期(1-3月)

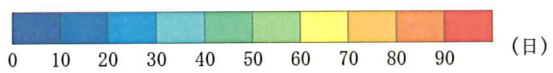
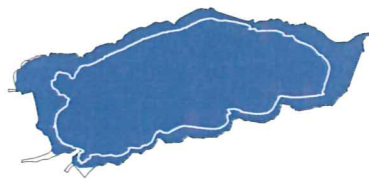
【現況】



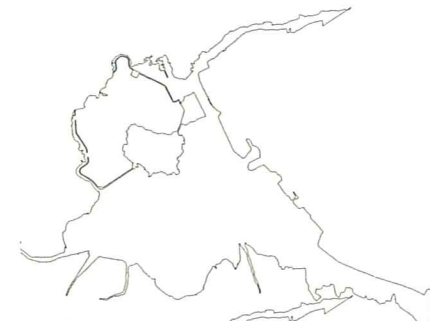
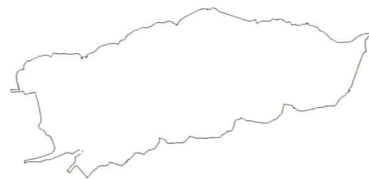
【バックグラウンド後】



【大橋川改修後】



【バックグラウンド後-現況】



【大橋川改修後-バックグラウンド後】

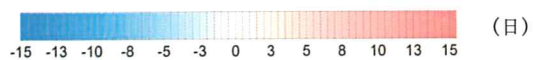
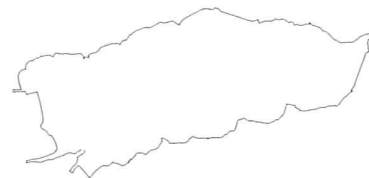
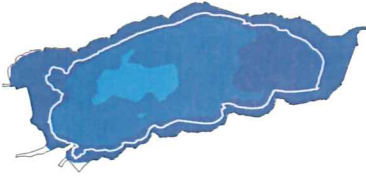


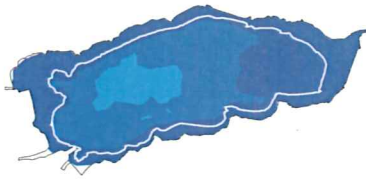
図 6. 1. 1-573 2mg/L 以下の溶存酸素累加日数の平面分布【底層, 冬期 1-3 月集計, H14】

H14:春期(4-6月)

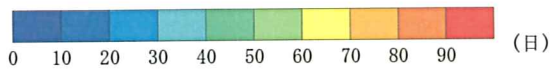
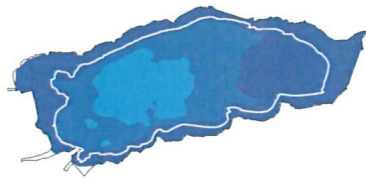
【現況】



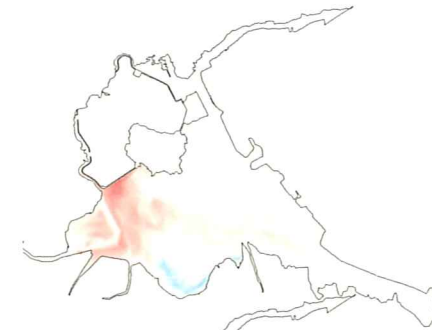
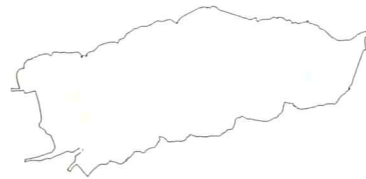
【バックグラウンド後】



【大橋川改修後】



【バックグラウンド後-現況】



【大橋川改修後-バックグラウンド後】

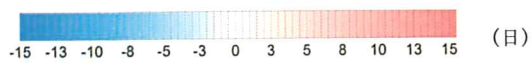
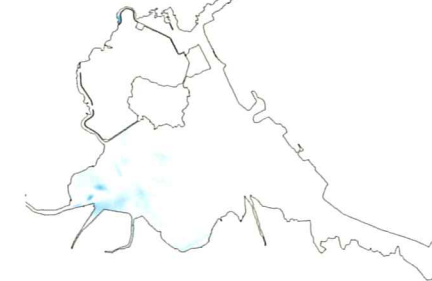
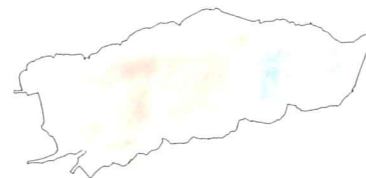
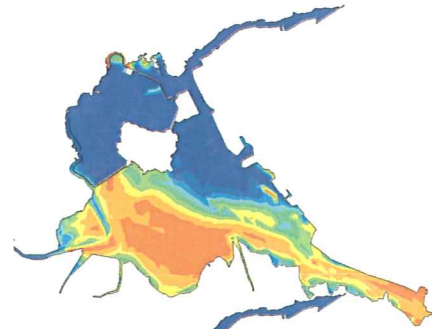
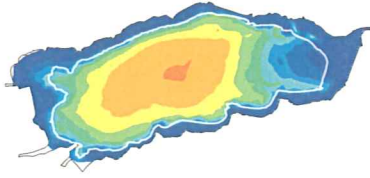


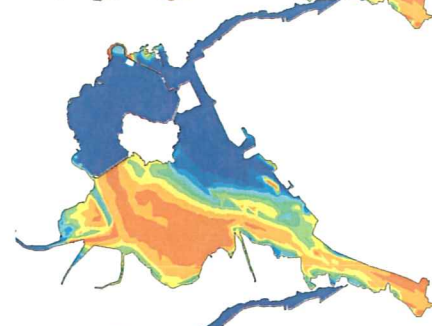
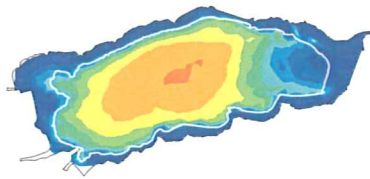
図 6. 1. 1-574 2mg/L 以下の溶存酸素累加日数の平面分布【底層，春期7-9月集計，H14】

H14:夏期(7-9月)

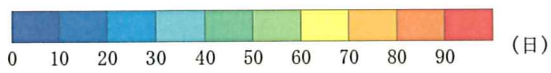
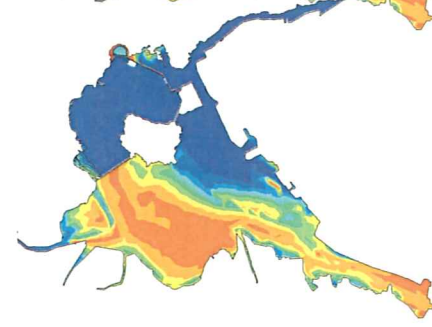
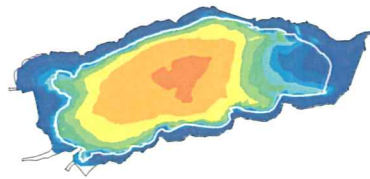
【現況】



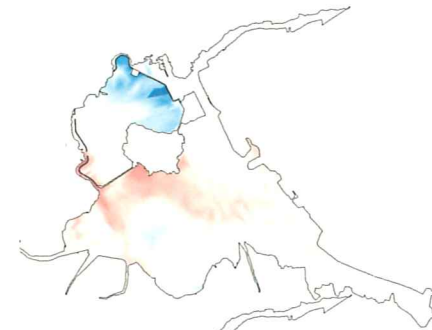
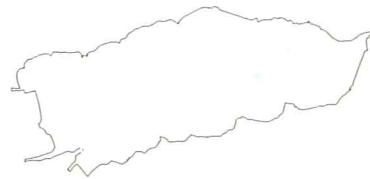
【バックグラウンド後】



【大橋川改修後】



【バックグラウンド後-現況】



【大橋川改修後-バックグラウンド後】

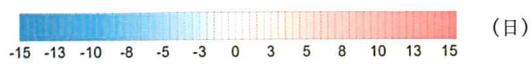
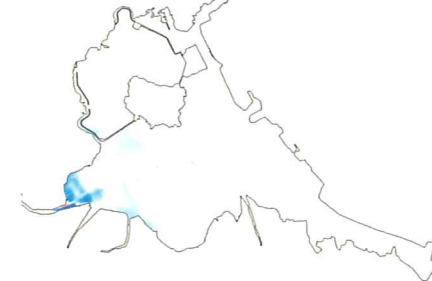
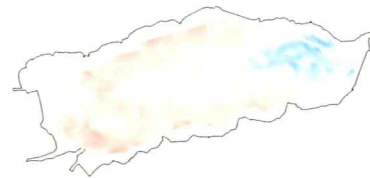
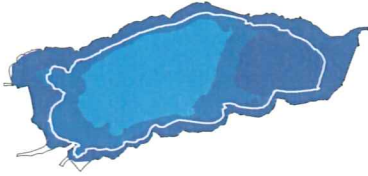


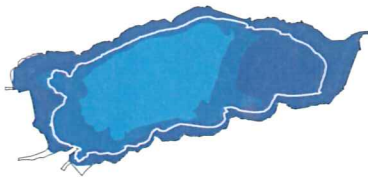
図 6. 1. 1-575 2mg/L以下の溶存酸素累加日数の平面分布【底層, 夏期1-3月集計, H14】

H14:秋期(10-12月)

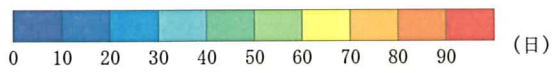
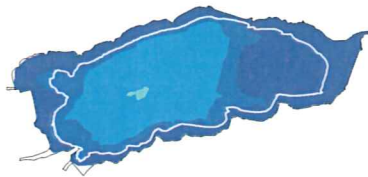
【現況】



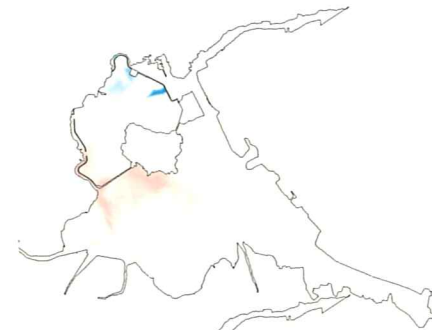
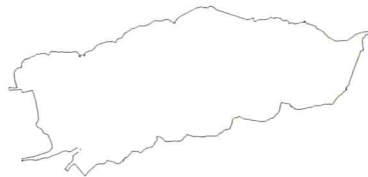
【バックラウンド後】



【大橋川改修後】



【バックラウンド後－現況】



【大橋川改修後－バックラウンド後】

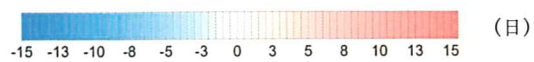
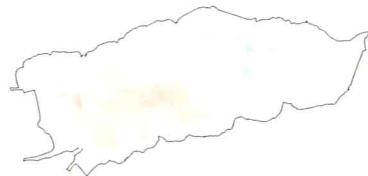
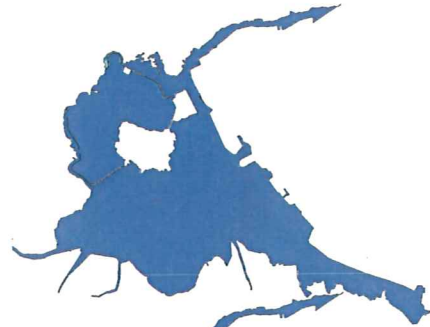
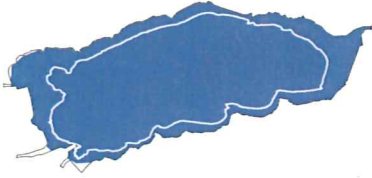


図 6. 1. 1-576 2mg/L 以下の溶存酸素累加日数の平面分布【底層, 秋期 10-12 月集計, H14】

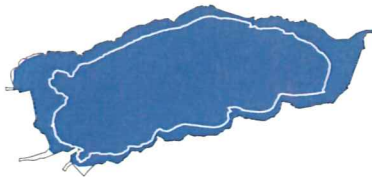


H15 冬期(1-3月)

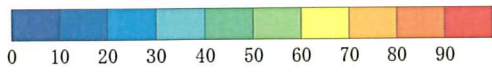
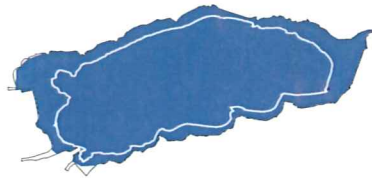
【現況】



【バックラウンド後】

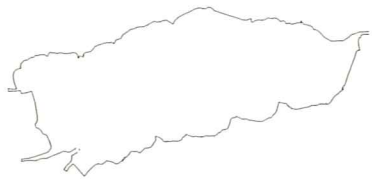


【大橋川改修後】

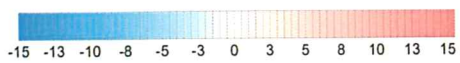
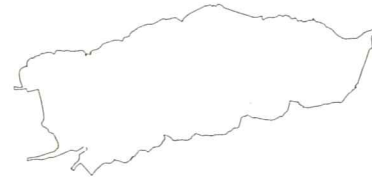


(日)

【バックラウンド後—現況】



【大橋川改修後—バックラウンド後】

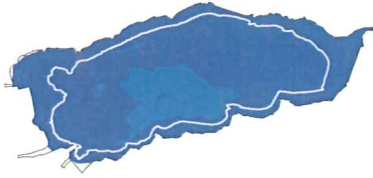


(日)

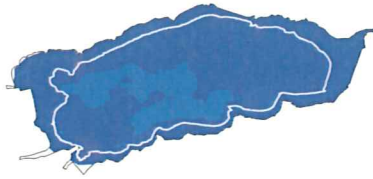
図 6. 1. 1-577 2mg/L 以下の溶存酸素累加日数の平面分布【底層, 冬期 1-3 月集計, H15】

H15 春期(4-6月)

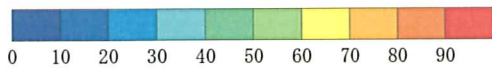
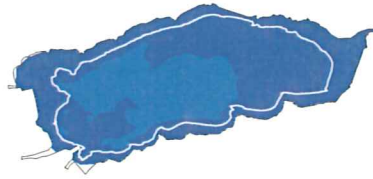
【現況】



【バックラウンド後】

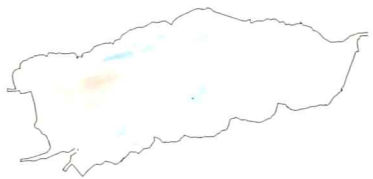


【大橋川改修後】

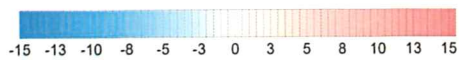
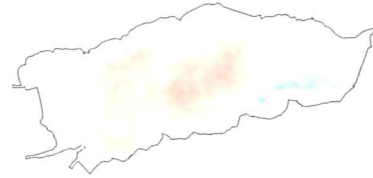


(日)

【バックラウンド後－現況】



【大橋川改修後－バックラウンド後】

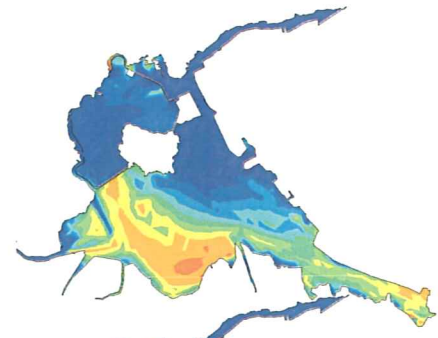
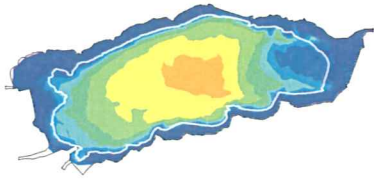


(日)

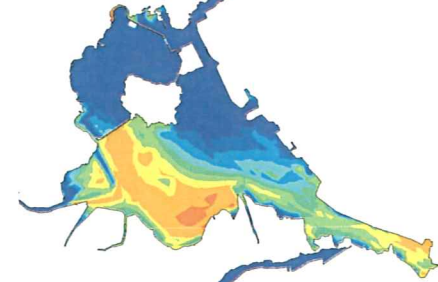
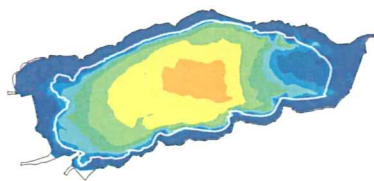
図 6. 1. 1-578 2mg/L 以下の溶存酸素累加日数の平面分布【底層, 春期 4-6 月集計, H15】

H15 夏期(7-9月)

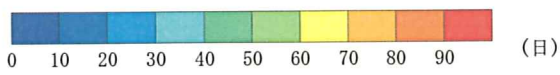
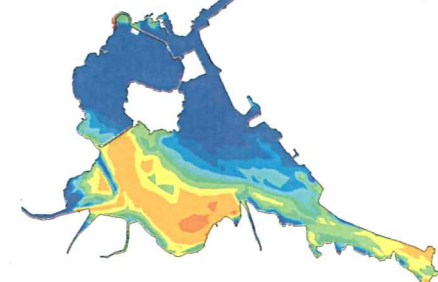
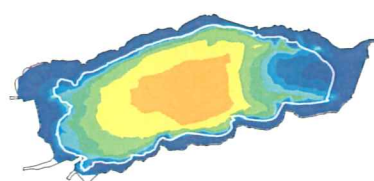
【現況】



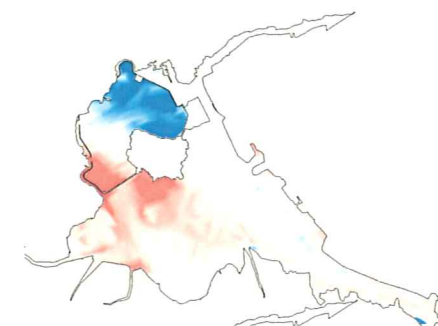
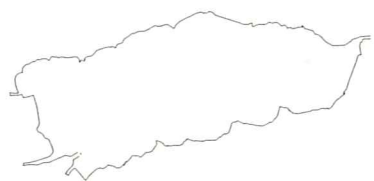
【バックグラウンド後】



【大橋川改修後】



【バックグラウンド後-現況】



【大橋川改修後-バックグラウンド後】

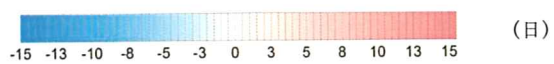
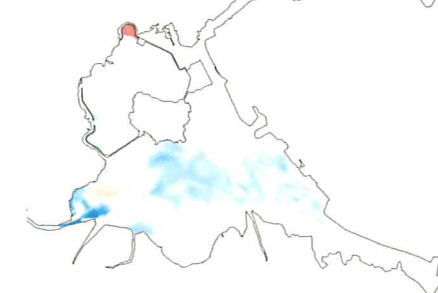
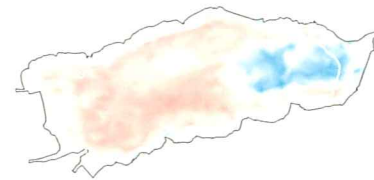
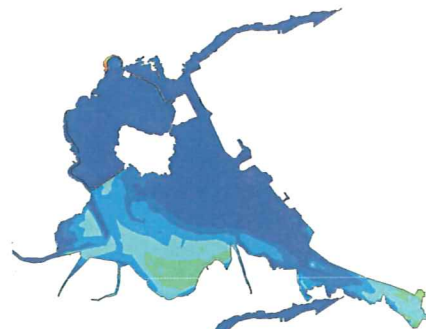
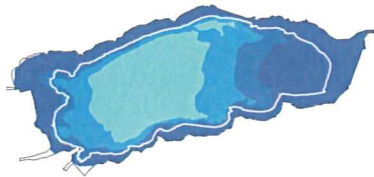


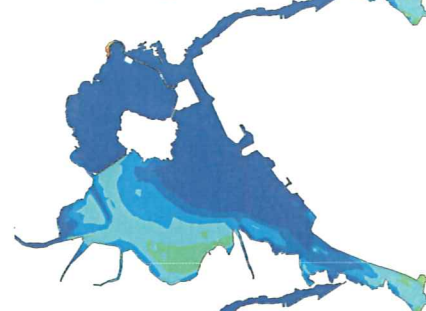
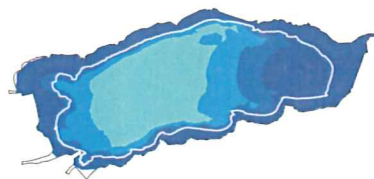
図 6. 1. 1-579 2mg/L 以下の溶存酸素累加日数の平面分布【底層, 夏期 7-9 月集計, H15】

H15 秋期(10-12月)

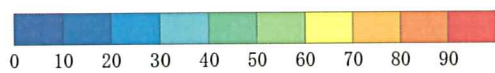
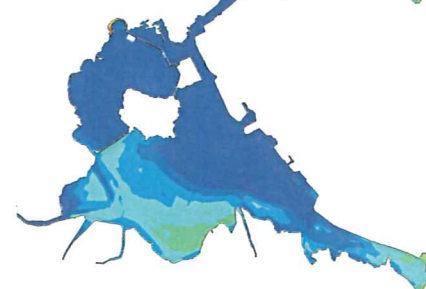
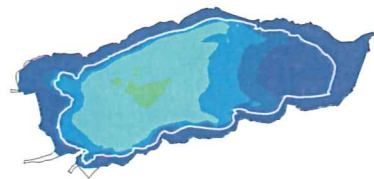
【現況】



【バックラウンド後】

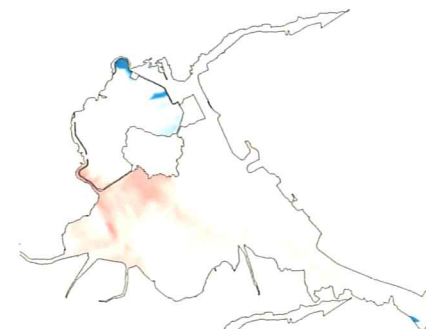
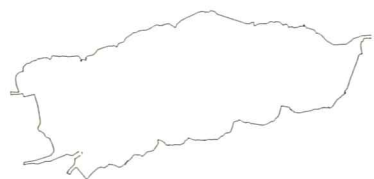


【大橋川改修後】

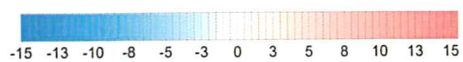
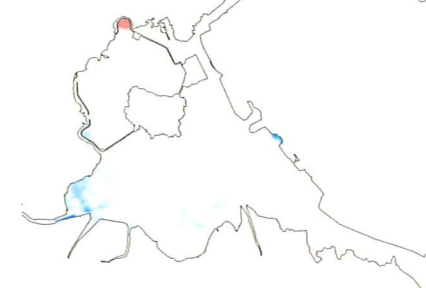
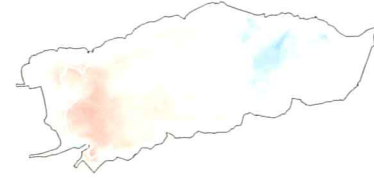


(日)

【バックラウンド後-現況】



【大橋川改修後-バックラウンド後】

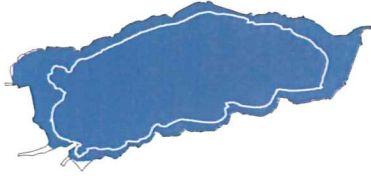


(日)

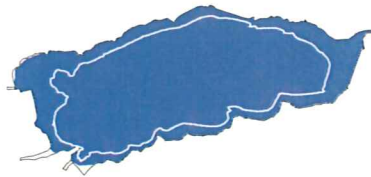
図 6.1.1-580 2mg/L 以下の溶存酸素累加日数の平面分布【底層, 秋期 10-12 月集計, H15】

H6:冬期(1-3月)

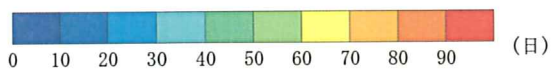
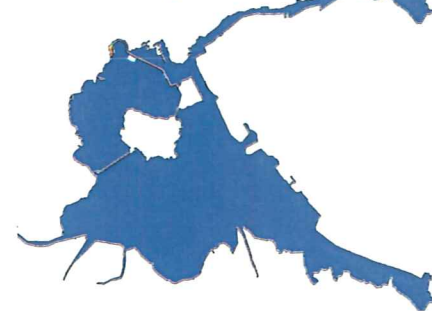
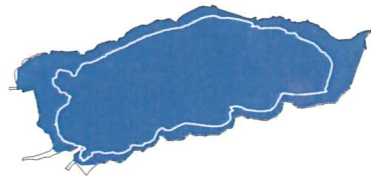
【現況】



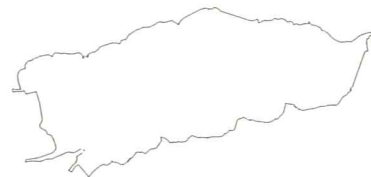
【バックラウンド後】



【大橋川改修後】



【バックラウンド後－現況】



【大橋川改修後－バックラウンド後】

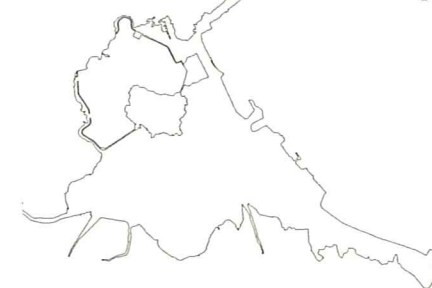
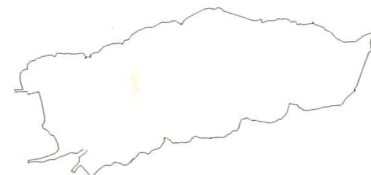
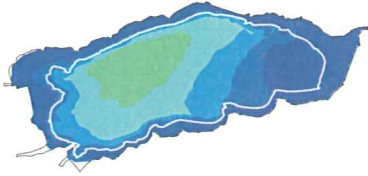


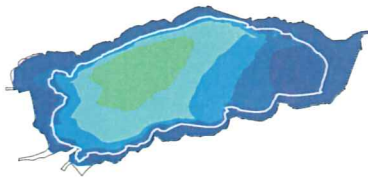
図 6. 1. 1-581 3mg/L以下の溶存酸素累加日数の平面分布【底層，冬期1-3月集計，H6】

H6:春期(4-6月)

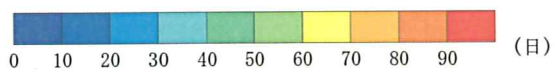
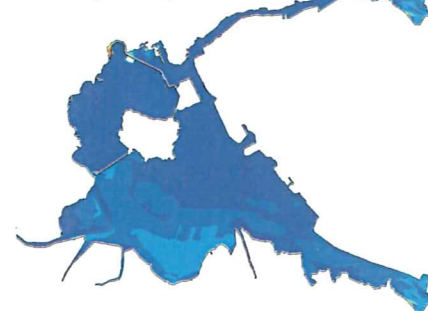
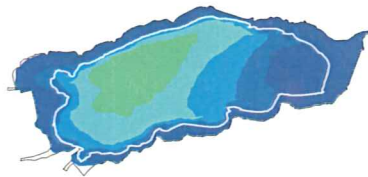
【現況】



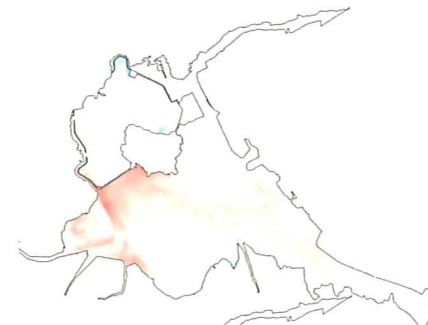
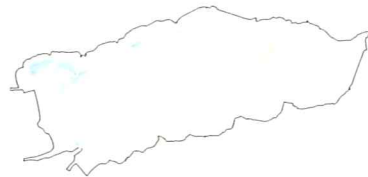
【バックグラウンド後】



【大橋川改修後】



【バックグラウンド後-現況】



【大橋川改修後-バックグラウンド後】

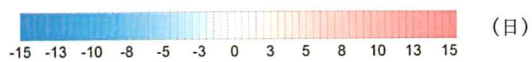
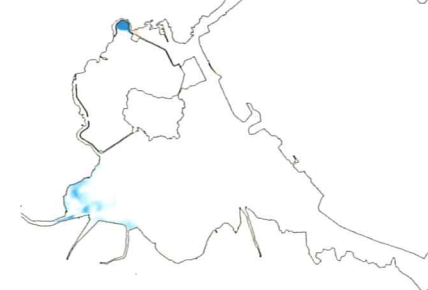
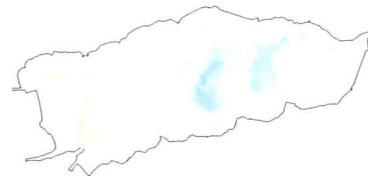
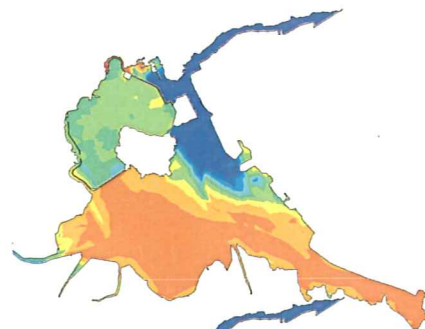
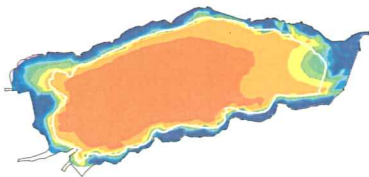


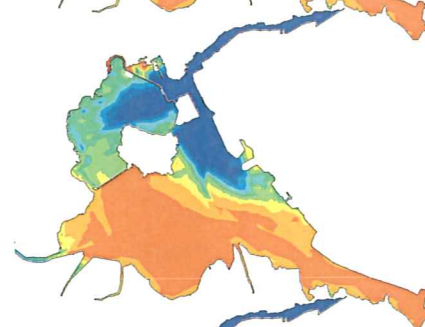
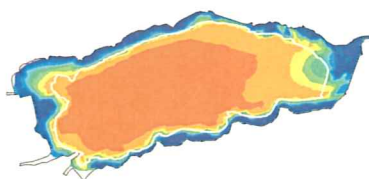
図 6. 1. 1-582 3mg/L 以下の溶存酸素累加日数の平面分布【底層, 春期 4-6 月集計, H6】

H6:夏期(7-9月)

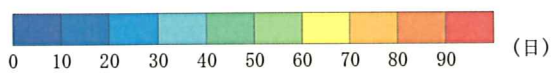
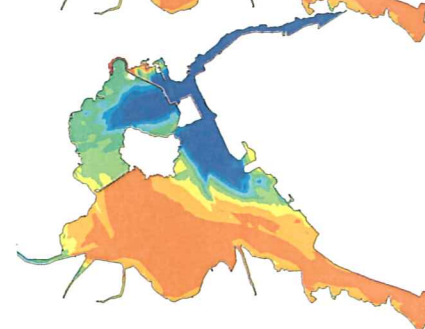
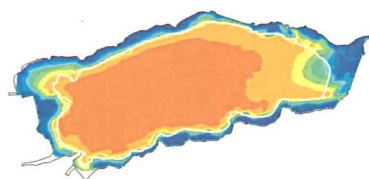
【現況】



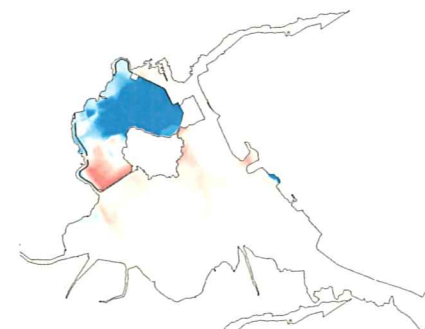
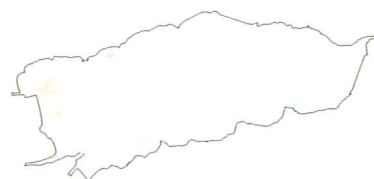
【バックラウンド後】



【大橋川改修後】



【バックラウンド後-現況】



【大橋川改修後-バックラウンド後】

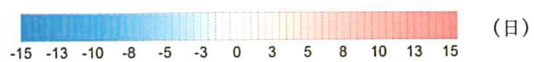
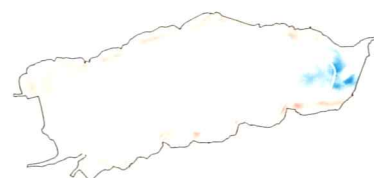
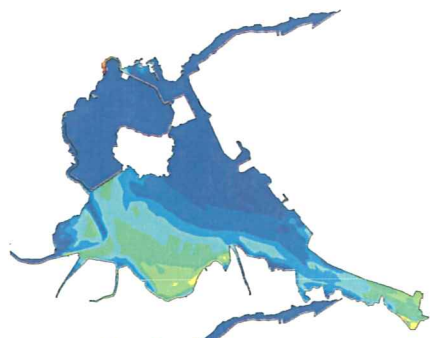
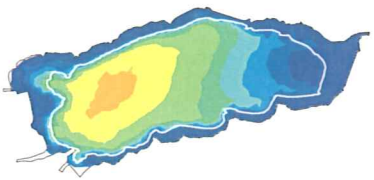


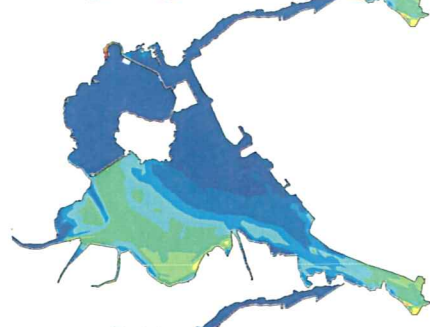
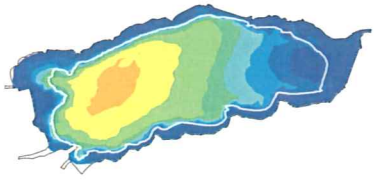
図 6. 1. 1-583 3mg/L 以下の溶存酸素累加日数の平面分布【底層, 夏期 7-9 月月集計, H6】

H6:秋期(10-12月)

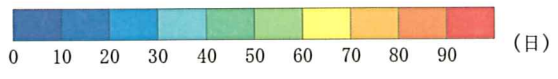
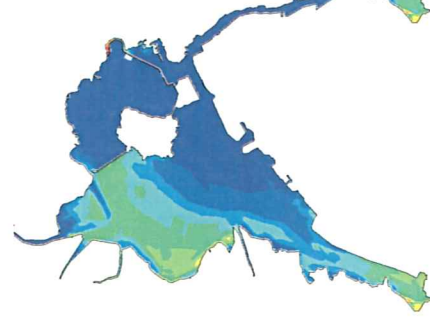
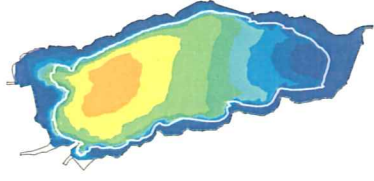
【現況】



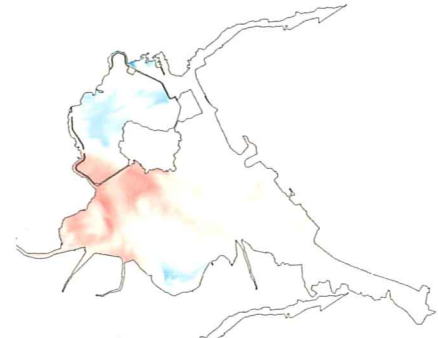
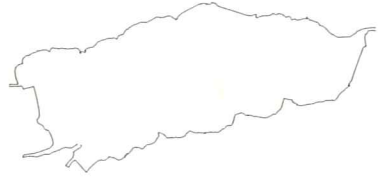
【バックラント後】



【大橋川改修後】



【バックラント後-現況】



【大橋川改修後-バックラント後】

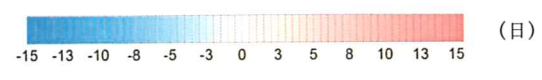
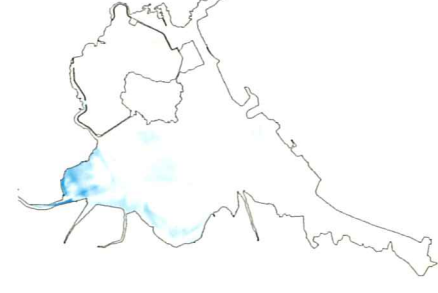
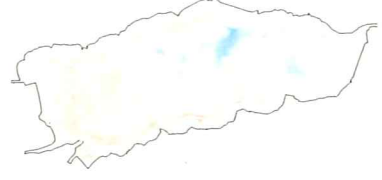
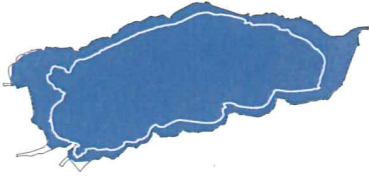


図 6. 1. 1-584 3mg/L以下の溶存酸素累加日数の平面分布【底層, 秋期10-12月月集計, H6】

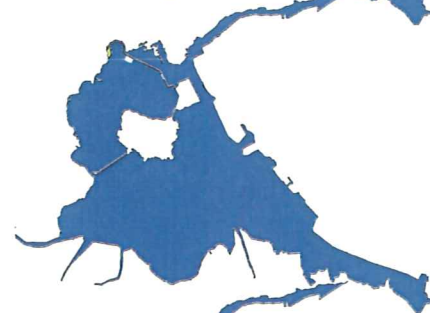
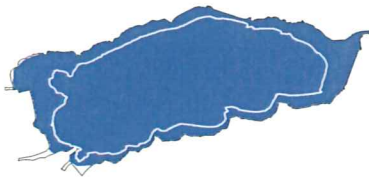


H7:冬期(1-3月)

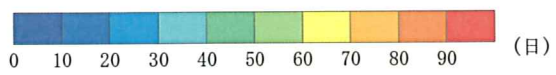
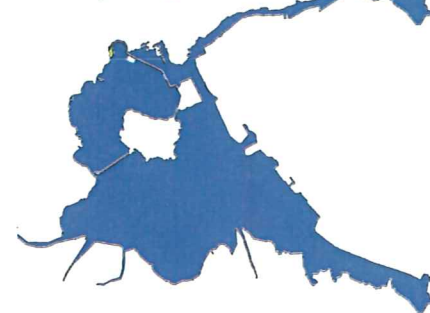
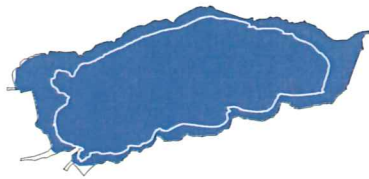
【現況】



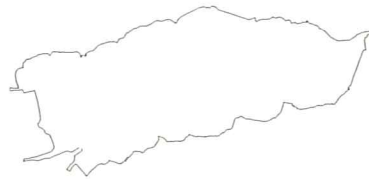
【バックラウンド後】



【大橋川改修後】



【バックラウンド後-現況】



【大橋川改修後-バックラウンド後】

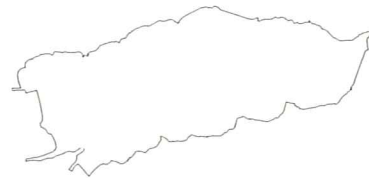
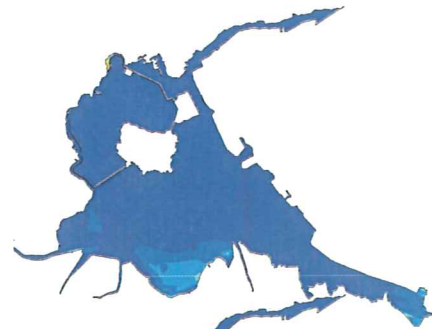
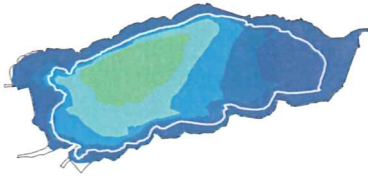


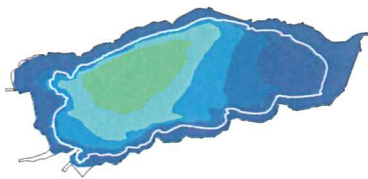
図 6. 1. 1-585 3mg/L 以下の DO 累加日数の平面分布【底層, 冬期 1-3 月集計, H7】

H7:春期(4-6月)

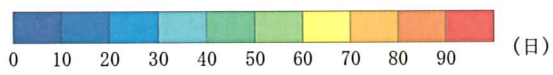
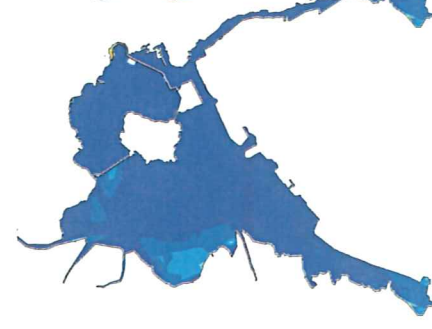
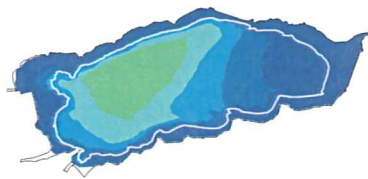
【現況】



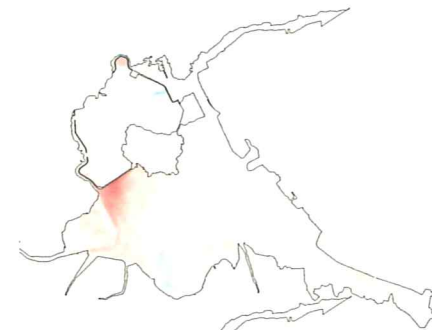
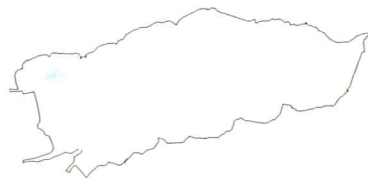
【バックラウンド後】



【大橋川改修後】



【バックラウンド後－現況】



【大橋川改修後－バックラウンド後】

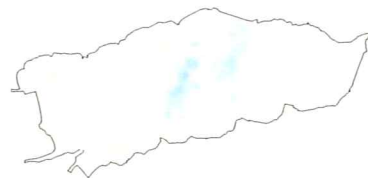
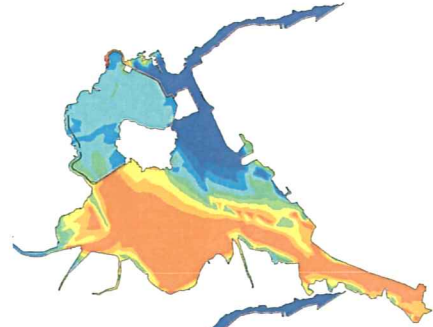
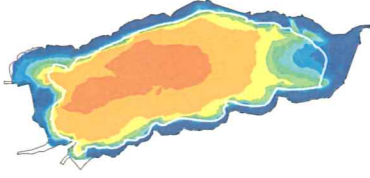


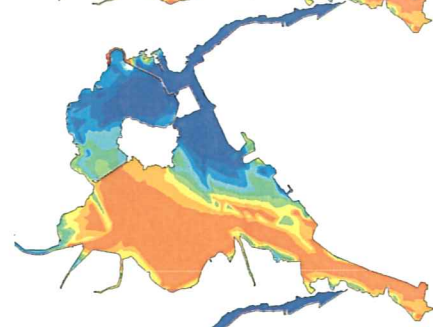
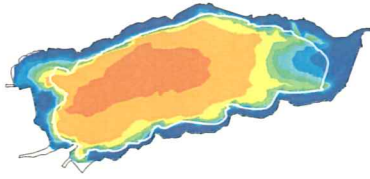
図 6. 1. 1-586 3mg/L 以下の DO 累加日数の平面分布【底層, 春期 4-6 月集計, H7】

H7:夏期(7-9月)

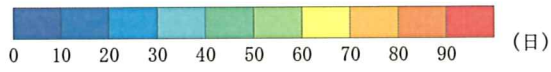
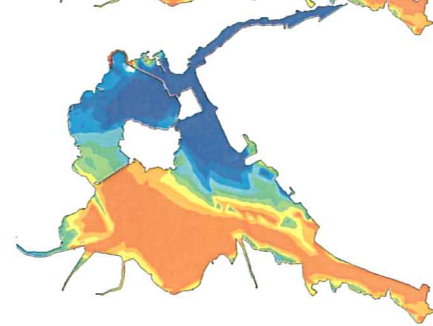
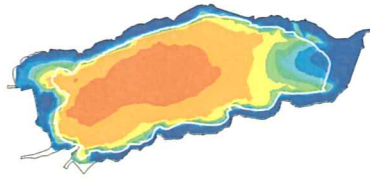
【現況】



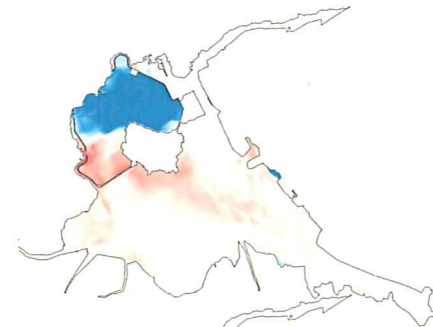
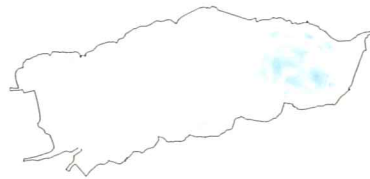
【バックグラウンド後】



【大橋川改修後】



【バックグラウンド後-現況】



【大橋川改修後-バックグラウンド後】

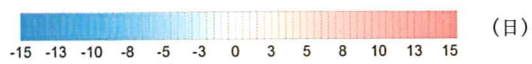
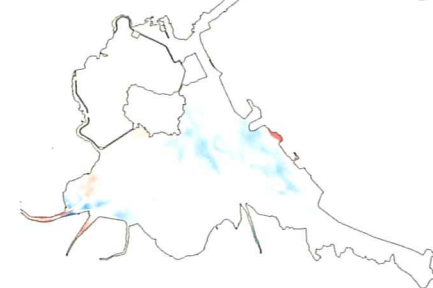
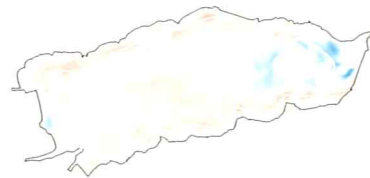
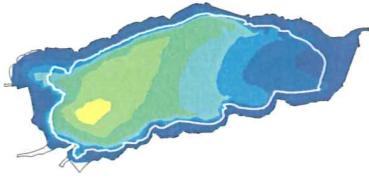


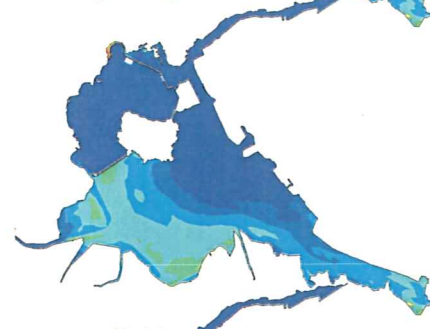
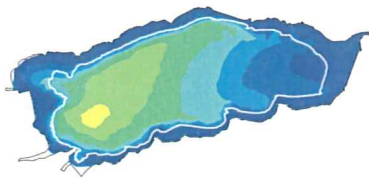
図 6. 1. 1-587 3mg/L 以下の DO 累加日数の平面分布【底層, 夏期 7-9 月月集計, H7】

H7:秋期(10-12月)

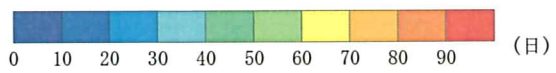
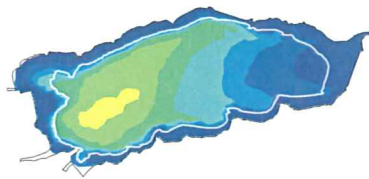
【現況】



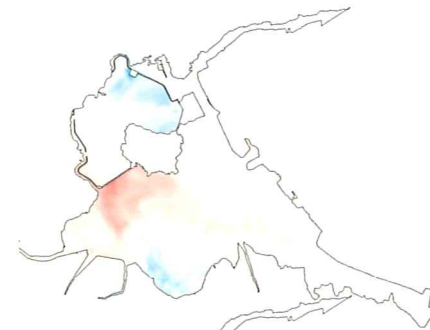
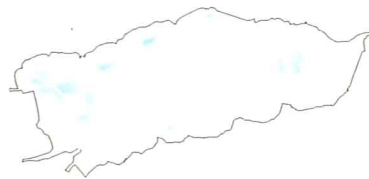
【バックラウンド後】



【大橋川改修後】



【バックラウンド後-現況】



【大橋川改修後-バックラウンド後】

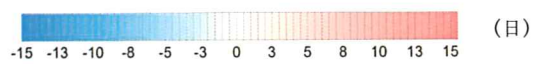
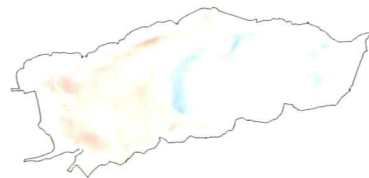
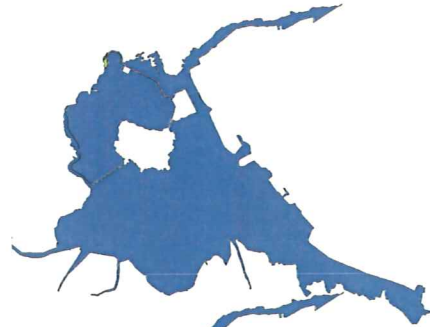
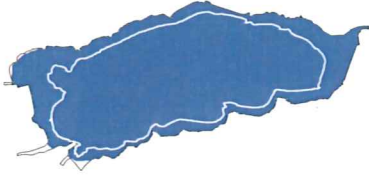


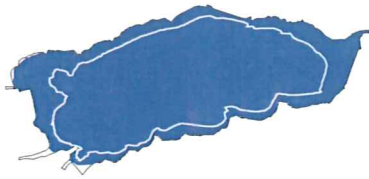
図 6. 1. 1-588 3mg/L 以下の DO 累加日数の平面分布【底層, 秋期 10-12 月月集計, H7】

H8:冬期(1-3月)

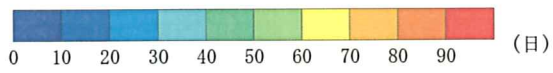
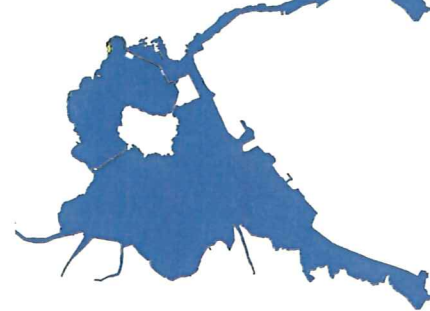
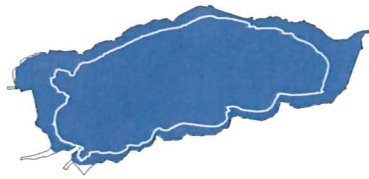
【現況】



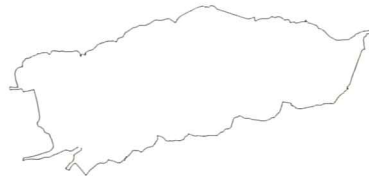
【バックラウンド後】



【大橋川改修後】



【バックラウンド後-現況】



【大橋川改修後-バックラウンド後】

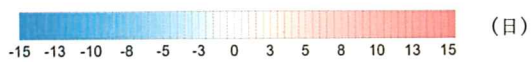
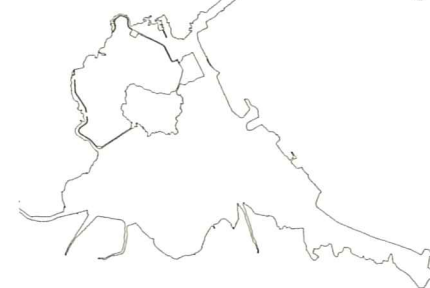
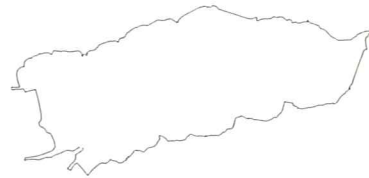
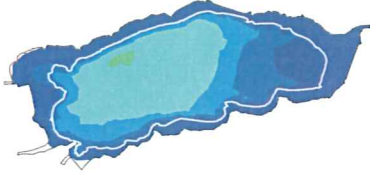


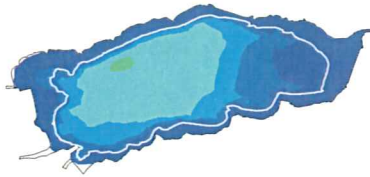
図 6. 1. 1-589 3mg/L 以下の DO 累加日数の平面分布【底層, 冬期 1-3 月集計, H8】

H8:春期(4-6月)

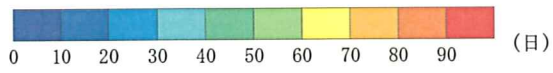
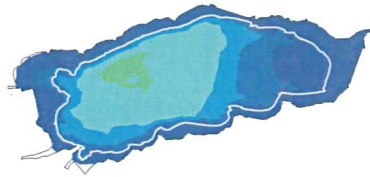
【現況】



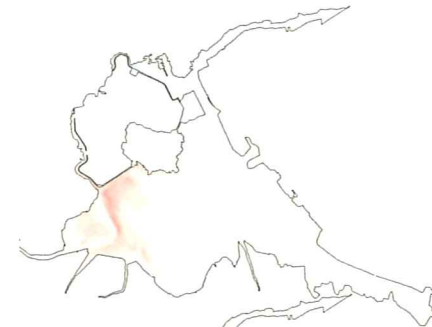
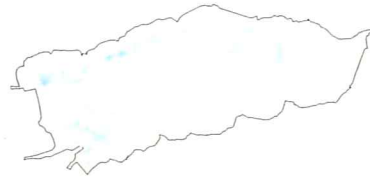
【バックグラウンド後】



【大橋川改修後】



【バックグラウンド後-現況】



【大橋川改修後-バックグラウンド後】

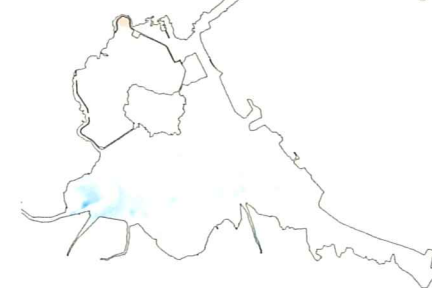
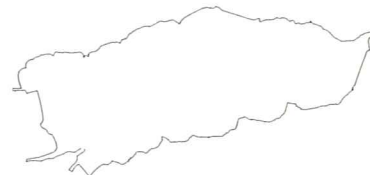


図 6. 1. 1-590 3mg/L 以下の DO 累加日数の平面分布【底層, 春期 4-6 月集計, H8】