
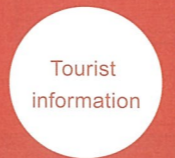


**Free public wireless LAN: Available locations**

- 
**SSID**
  - Hiroshima\_Free\_Wi-Fi\_Lite
  - <15 min per session × 4 sessions per day \*Can access up to 60 minutes per day (total).>
  - Yamaguchi\_Free\_Wi-Fi\_Premium
  - <30 min per session × n sessions per day \*Can access any number of times per day.>

After you make your selection and launch your browser, an authentication screen will appear. If you consent to the use agreement and enter your email address, you can then use the system.



**Obatake Tourism Association**

Weekdays  
4830 Kojiro, Yanai City, Yamaguchi Prefecture 749-0101  
TEL/0820-45-2414 FAX/0820-45-2456  
MAIL oobatakechou@yamaguchi-shokokai.or.jp



**Obatake Tourist Center**

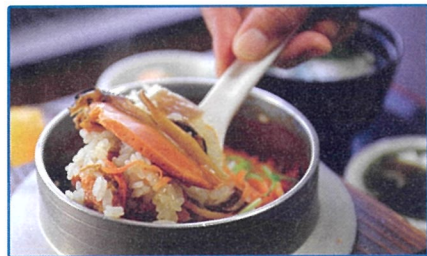
Sat, Sun, holidays  
4144-9 Higashi-Seto, Kojiro, Yanai City, Yamaguchi Prefecture 749-0101  
TEL/0820-45-2126



# Eat

"Eat" ..... Obatake is a treasure house of fresh, delicious seafood.

Restaurant



Where you can eat fresh fish anytime

**Ajiro** ☎0820-45-3137

Closed: Mondays  
Open: 11:00 to 14:00, 17:00 to 20:30 (L/O)



Stylish seafood restaurant

**Naruto** ☎0820-45-3144

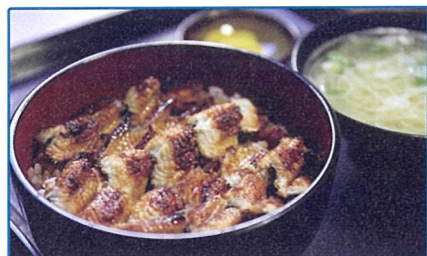
Closed: Tuesdays and fourth Wednesday  
Open: 11:00 to 15:00, 17:00 to 21:00



Creative Japanese food for a time of blissful dining

**Chiso Yo** ☎0820-45-3363

Closed: Mondays and first Tuesday  
Open: Reservation required



Excellent grilled sea eel on rice with secret sauce

**Kometoku** ☎0820-45-2707

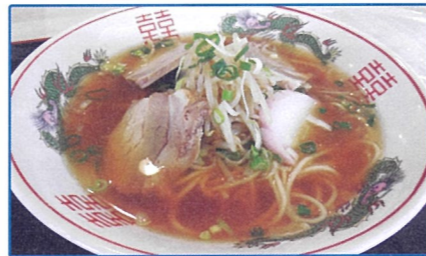
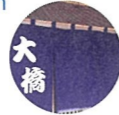
(Open Saturdays and Sundays only)  
Open: 11:00 to 14:00, 17:00 to 20:30



Sushi shop popular for its fresh ingredients

**Ohashi** ☎0820-45-2877

Closed: Wednesdays  
Open: 11:30 to 14:00, 17:00 to 21:30



Popular for its excellent ramen and fine coffee

**Ocean** ☎090-8718-7837

Closed: Mondays  
Open: 11:00 to 17:00



Fine seafood and carefully selected menu

**Setomi** ☎0820-45-2558

Closed: Mondays  
Open: 11:00 to 14:00, 17:00 to 20:30 (Sundays and holidays)



Where you can enjoy seafood and sake

**Shiki** Seafood and Karaoke

☎0820-45-3034  
Closed: Wednesdays and Thursdays  
Open: 17:00 to 22:00



Where you can enjoy home cooking and karaoke

**Katsura Tavern** ☎0820-45-2222

Closed: Mondays  
Open: 17:00 to 22:00



Offering lavish seafood dinners and rooms with a view

**Kaigetsu Ryokan**

☎0820-45-2422  
Closed: On irregular basis



Reservation required

## Shiomachi Nabe

An Obatake specialty, this seafood stew uses natural sea bream from the Obatake Seto Strait as its main ingredient.

Original stews from four area restaurants are offered.

<http://tainabe.oobatake.net>



# Play

"Play" ..... Looking back at the life of Gessho and the Meiji Restoration.

Playground



Seikyo Sodo

Gessho was a Buddhist monk who was born about 200 years ago in the Myoenji Temple in what is now the Tozaki area of the city of Yanai.

Gessho traveled on foot throughout the country in pursuit of learning. Seeing the influence of foreign cultures, he became deeply concerned about Japan's future. He thus devoted his efforts to Japan's future, including establishing a private "Seikyo Sodo Academy," which he used as a place to educate young people and appeal to the domain lords for policies aimed at protecting against the threat from foreign countries.

Gessho's ideas had a great effect on Yoshida Shoin and others. Due in part to the actions of zealous loyalists who had studied at Seikyo Sodo, Imperial power was restored with the Meiji Restoration in 1868.

Gessho was also a successful poet, and his poem containing the line "How can the village graveyard be the only resting place?" has resonated throughout the world.

**Gessho Museum** ☎0820-45-2211

Admission: 200 yen (150 yen each if in group of 15 or more), free if high school age or younger

Closed: Mondays; Open: 9:00 to 16:00

**So-Gessho-Kenshoukai website**

<http://www.gessho.org/>



Monk Gessho portrait

野見立忘出却聞  
望若鳥成不後還  
埋骨何須墳墓地  
人間到處有青山

# Buy

"Buy" ..... Special souvenirs await if you buy locally.

Shopping



Feels just like a marketplace!  
**Kawasaki Fresh Fish Headquarters**

☎0820-45-2102 Closed: Wednesdays  
Open: 8:00 to 18:00



They'll cut fresh fish into sashimi for you!

Fresh Fish **Kawasaki**

☎0820-45-3265 Closed: Wednesdays  
Open: 8:30 to 18:00



Have fresh fish delivered to your home!

**Kawasaki Fresh Fish Kojiro Shop**

☎0820-45-2703 Closed: Tuesdays  
Open: 7:00 to 18:00



Expect to be welcomed in a homelike atmosphere!

**Iwakane Fresh Fish Shop**

☎0820-45-2268  
Closed: Sundays and holidays  
Open: 9:30 to 18:00



For anything and everything, from fresh fish to souvenirs!

Fresh Fish, Deli, and Souvenirs **Matsumoto**

☎0820-45-2182 Closed: Mondays  
Open: 8:00 to 16:00



Freshly picked vegetables, flowers, and much more!

Vegetables, Flowers, Deli, and Seafood **Uzushio Kasan no Mise**

☎0820-45-2126 Closed: Mondays  
Open: 8:00 to 16:00



Full lineup of Mom's handmade lunch boxes and deli delights!

Deli and Miscellany **Uzushio Kasan no Mise** <Processing Division>

☎0820-45-3353 Closed: Mondays  
Open: 9:00 to 14:00